

# BE AWARE THAT SOME EARLY SYMPTOMS OF WITHDRAWAL AND COVID-19 INFECTION ARE SIMILAR.

These include fever and muscle soreness. If symptoms include a persistent cough, it could be COVID-19

## YOU ARE AT AN INCREASED RISK OF BECOMING SERIOUSLY ILL OR DYING:

(1) COVID-19 infection will worsen breathing impacts of opioids;  
(2) opioid withdrawal may worsen breathing difficulties; (3) smoking drugs, like crack or meth, makes breathing problems worse.

## DIFFICULT TO INHALE:

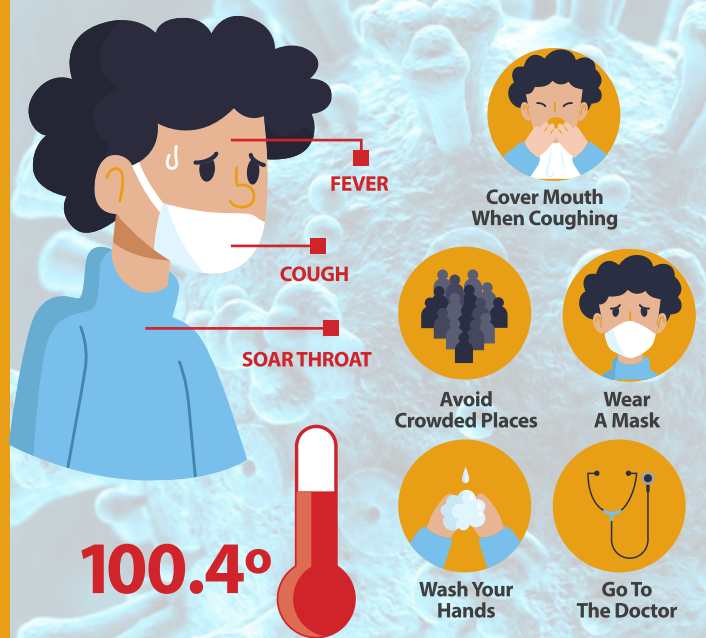
If you smoke drugs, like crack or meth, COVID-19 infection will make it more difficult to inhale smoke. Smoking drugs will worsen breathing problems.

## IF YOU THINK YOU'RE GETTING SICK:

Avoid going to your local harm reduction and addictions programs - HAVE THEM DELIVER SUPPLIES TO YOU. Tell them you are sick so they can take steps to keep themselves safe.

## BE PREPARED FOR INVOLUNTARY WITHDRAWAL:

Be ready to go through involuntary withdrawal. Your dealer might get sick or the drug supply might be disrupted. Try to be prepared by stocking up. Talk to a medical provider about starting methadone or buprenorphine. Make sure you have all the necessary medications, food, and drinks needed to help detox. Try to have protein-based and electrolyte drinks like Pedialyte or Ensure on hand.



People who use drugs often have weaker immune systems, respiratory (breathing) problems, and other conditions that place them at a higher risk of getting covid-19 infection. Help keep everybody safe by following this advice.

You can reduce your risk for COVID-19 infection by staying at least six feet away from other people, coughing or sneezing into your arm, avoiding touching your face, and washing your hands for at least 20 seconds with soap and water.

## MOST COMMON SYMPTOMS

- ✓ Fever
- ✓ Cough
- ✓ Shortness of Breath
- ✓ Diarrhea
- ✓ Vomit
- ✓ Pneumonia

## TRANSMISSION

- ✓ Contaminated Objects
- ✓ Air
- ✓ Humans

### Sex Workers and Allies Network – (SWAN)

Call or Text: **475-441-4350**

The Syringe Services Program at the Community Health Care Van/Mobile Services/Yale University

Call: (Rolo) **203-823-0743**,  
(Angel) **203-996-0162**, or (Migdalia) **203-535-2081**

For Full Listing of SSPs Visit

[www.ghhrc.org](http://www.ghhrc.org) | [f](https://www.facebook.com/GHRC) [@GHRC](https://www.instagram.com/GHRC)

### For Additional Support and Services

Call or Visit: 860-263-8720 | Drop-In Site | Open 7 Days A Week  
557 Albany Ave, Hartford, CT 06112 | 28 Grand St, Hartford, CT 06106



# GUIDANCE FOR PEOPLE WHO USE SUBSTANCES ON COVID-19 (NOVEL CORONAVIRUS)



PHOTO: GETTY IMAGES  
ILLUSTRATION: ULTRAQO  
RENDERING: PHOTOFEST

# Remember That Practicing HARM REDUCTION CAN HELP YOU TO AVOID COVID-19 INFECTION

And Additional Steps Can Help To Reduce Your Risk Of Getting Sick:

## DRUGS:

If you have the money and are able, stock up on your drug(s) of choice before things deteriorate. **AVOID BINGEING** on drugs that you are stockpiling so you have access to a supply. Try to have as many **WAYS TO CONTACT DEALERS** in your area as possible. Your access to drugs might be disrupted.

## ALCOHOL:

If you have an alcohol use disorder, the money, and are able, stock up on enough alcohol to last a few weeks. **AVOID BINGEING** on stockpiled alcohol, if possible, so that you have access to enough to avoid alcohol withdrawal, and things like seizures. One way to do this is by **MANAGING YOUR ALCOHOL USE** by consuming an amount of alcohol equivalent to 5 ounces of wine or 3 ounces of sherry hourly or as needed.

## HARM REDUCTION SUPPLIES:

Be prepared for the **POSSIBILITY OF SYRINGE EXCHANGES AND DRUG TREATMENT PROGRAMS CLOSING DOWN**. If you are able, stockpile enough harm reduction supplies to last you a few weeks - longer if you are at higher risk of infection or complications. This includes things like naloxone, syringes, cookers, pipes, and straws. Get a Sharps container to get rid of used syringes. If you can't get one, use something like a plastic laundry detergent bottle or soda bottle. Label these bottles "SHARPS CONTAINER". Do not recycle them.

## METHADONE & BUPRENORPHINE:

Check with your medical medical provider to see if services might be changing. **IF YOU HAVE A PRE-EXISTING CONDITION** that puts you at greater risk of infection, **LET YOUR PROGRAM KNOW**. Ask your program and provider if you can have take homes or more refills on your medications. This means that you don't have to go to your provider to get new doses after your first collection.

## NALOXONE:

Stock up on naloxone in the event of an unintentional overdose. Emergency services are likely to take longer than usual during a pandemic.

## DON'T SHARE YOUR DRUG USE SUPPLIES:

Injecting equipment; crack or meth pipes; rose or spoons (for smoking crack or freebasing) straws or other nasal tubes (for inhaling/snorting); bong, vapes, joints; and drinks.

## AVOID INJECTING ALONE:

The illicit drug supply continues to be toxic. Be careful about the risk of overdose. Try not to use alone, especially if you inject drugs like heroin, fentanyl, or drugs that might have come into contact with them.

## IF YOU RUN OUT OF SYRINGES:

These can be disinfected and help prevent HIV and Hep C with 1:10 **DILUTED BLEACH**. If there's a lot of blood, rinse once with water to remove it. If not, skip this step and rinse once with the bleach. Load bleach fully into the syringe and expel it. Then rinse twice with clean water. If you don't have bleach, three rinses with clean water can work almost as well. Dull syringes can be sharpened using the striker on a matchbook. Rinse after sharpening to remove any particles in the syringe.

## IF YOUR SYRINGES ARE NO LONGER SAFE:

You have a few options: (1) **SNORT IT** - chop them into a powder finely and sniff slowly. It works but not as well as injecting; (2) **BOOTY BUMPING** - Dissolve with citric or ascorbic acid, put in a **NEEDLELESS SYRINGE** and squirt it up your bum/anus. Onset takes longer but you need less and the high lasts longer; (3) **SWALLOW IT** - heroin/fentanyl will go via your liver **BEFORE** reaching your brain, resulting in a morphine effect - but stopping withdrawal; (4) **SMOKE IT** - smoke drugs instead of injecting but keep in mind this can be hard to do with some drugs.

## CLEAN YOUR SMOKING SUPPLIES:

Use mouthpieces and pipe covers on your smoking supplies when possible. Frequently clean these mouthpieces and pipe covers using an alcohol-based cleaner (Like Purell or some other brand) or wipe (minimum 60% alcohol concentration)

## WIPE DOWN DRUG PACKAGES:

Use an alcohol-based cleaner or wipe to immediately wipe down your packages. If your dealer carries drugs in their mouth, ask them if they can stop doing this. If they won't, be careful handling the packages and do the cleaning as advised above. Remember that antibacterial washes don't kill viruses but are better than nothing, especially if they contain alcohol.

## DO NOT PUT DRUG BAGS OR WRAPS IN YOUR MOUTH, VAGINA OR ANUS

If you must carry drugs in your body, clean vigorously with an alcohol-based cleanser both before and after you take it out. If carried in your mouth, use an alcohol-based mouthwash afterwards.

## WASH YOUR HANDS

with soap and hot water vigorously for at least 20 seconds (but longer if you can) every time you come into contact with others, after handling money and after you get your drugs packages. Paper towels are preferred for drying hands, or at least use a clean towel. If you cannot wash your hands, clean your hands with an alcohol-based cleaner or wipes (minimum 60% alcohol concentration) - like the ones distributed by harm reduction programs.

## PREPARE YOUR DRUGS YOURSELF:

Don't handle or touch other people's drugs or equipment and don't let them touch yours. Avoid buying and splitting packages of drugs with others during this pandemic, if possible, to limit the number of people handling drugs. If you must split the drugs, make sure the person who touches the drugs sterilizes their hands.